



ILE MANUFACTURING LIMITED

FM 40432

Wanlip Road, Syston, Leicester, LE7 1PD

Telephone: 0116 2690900 Fax: 0116 2690939

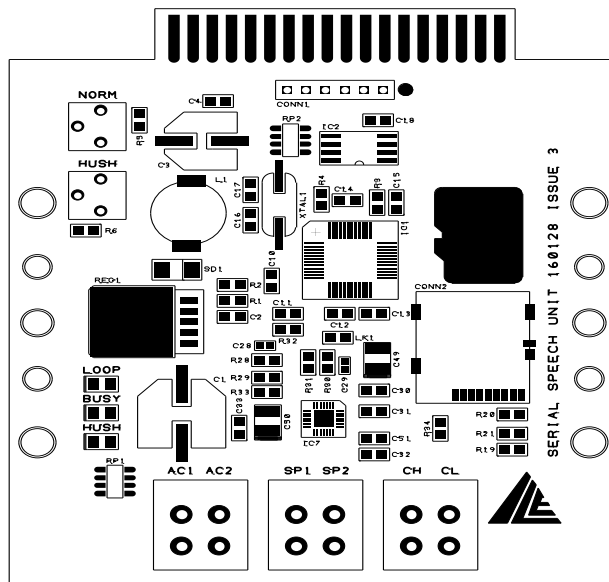
INSTALLATION/WIRING INSTRUCTIONS FOR THE UNIVERSAL SPEECH UNIT

Power Supply, Input & Output Specifications

| | | |
|------------------------------------|---|-----------------------|
| Power supply & input voltage range | = | 9 - 30V A.C. or D.C. |
| Power Supply peak current | = | @12V 100mA, @24V 50mA |
| Max Speaker output power (R.M.S) | = | 2W |

Wiring

The Speech unit should be wired as follows:-



Notes

- AC1 / AC2:** Power supply connections 9-30v AC/DC.
- SP1 / SP2:** External Speaker connections.
- CH / CL:** Connections for serial communication.
- NORM / HUSH:** Volume Control adjustment (for both normal & hush modes of operation)

The unit can operate with both ILE Skycom products, and ILE Serial products. Fixings options include rack mount or panel mount.

Alternative speech formats are also available, contact ILE for details.

For further information regarding the speech unit, please refer to the technical manual.